

Retisert migration into the anterior chamber

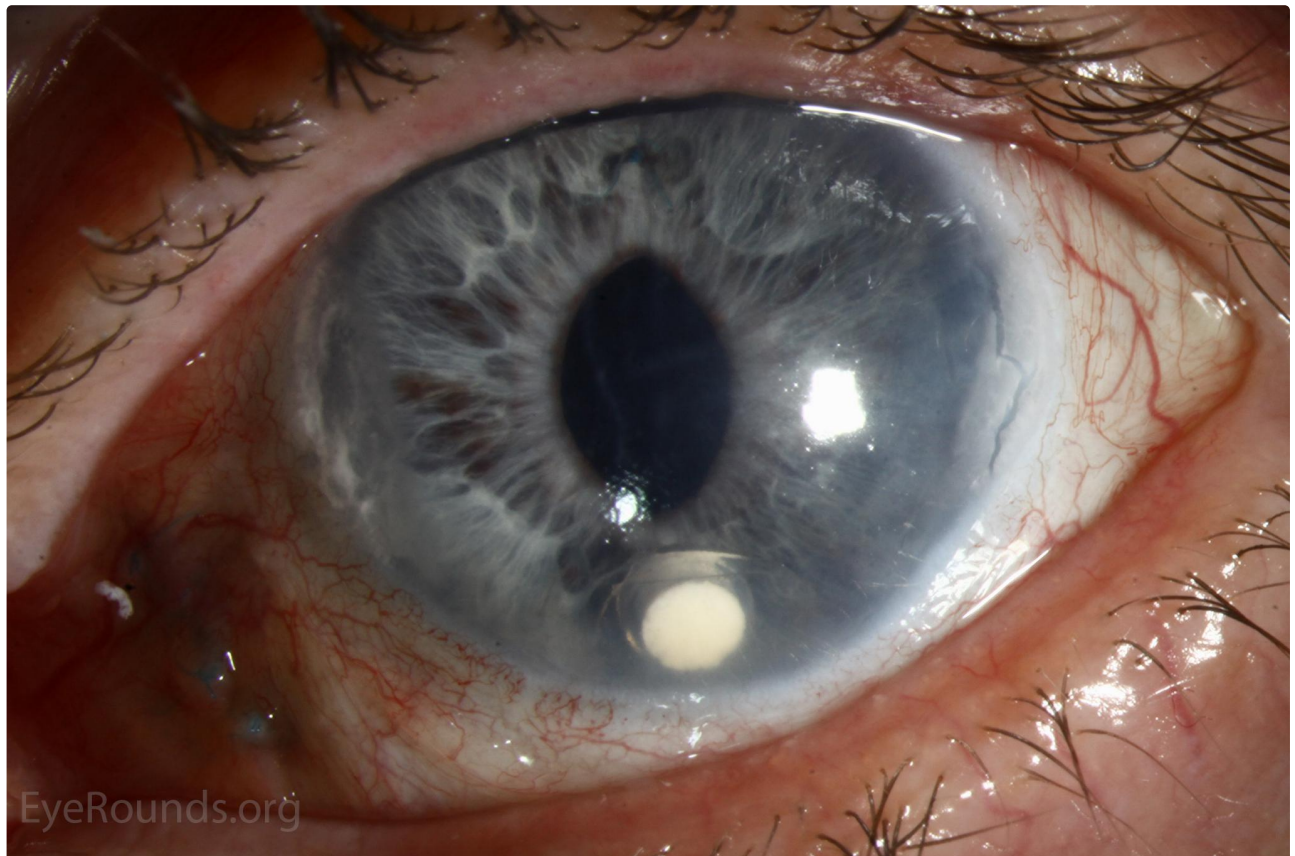
Category(ies): Cornea, External Disease, Retina, Vitreous

Contributor: [Jesse Vislisel, MD](#)

Photographer: Randy Verdick, FOPS

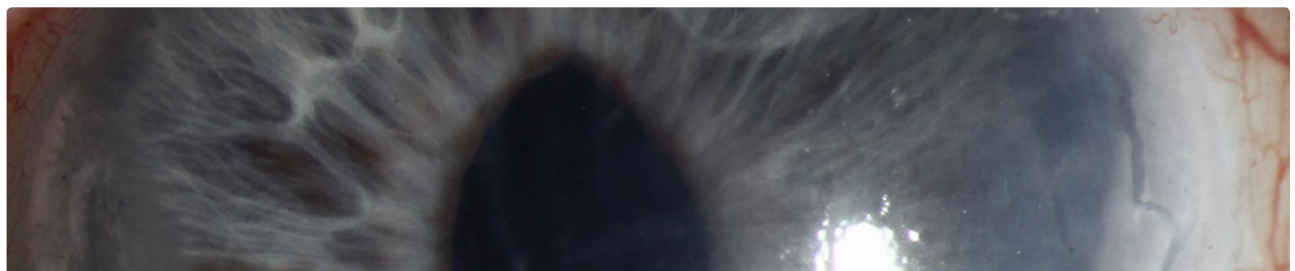


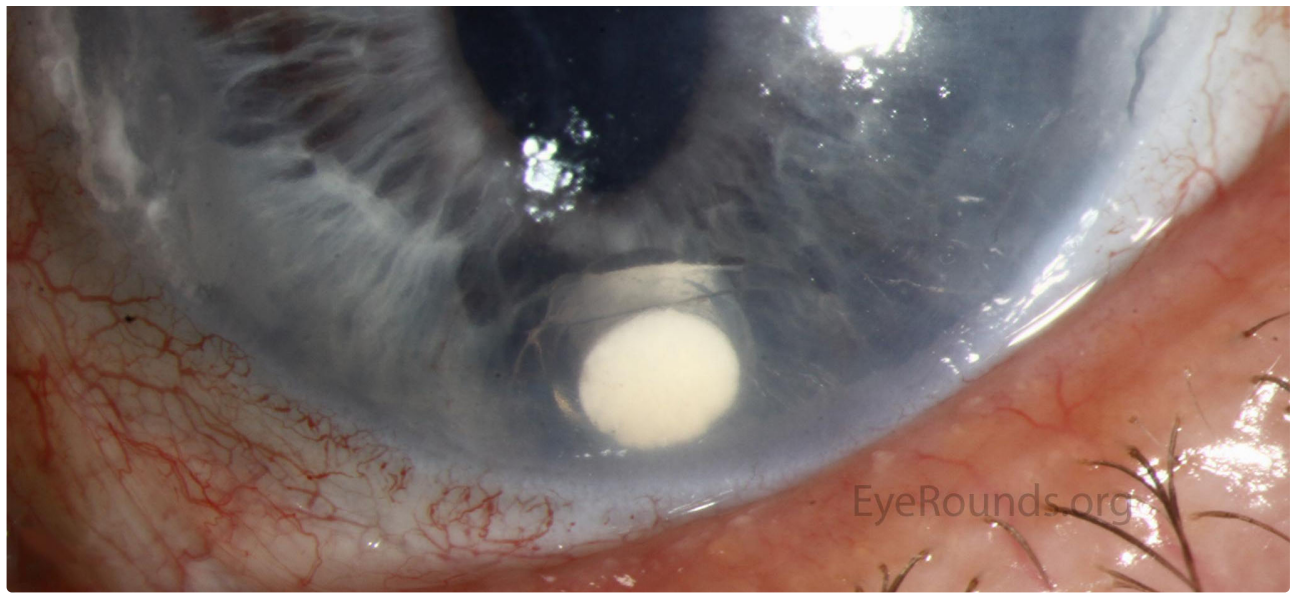
This patient underwent multiple Retisert implants for sympathetic ophthalmia and has an iris-sutured posterior chamber intraocular lens implant due to previous subluxation of the lens. This Retisert implant came detached and migrated into the anterior chamber resulting in corneal decompensation. It was later surgically removed resulting in resolution of the corneal edema.



 [Enlarge](#)

 [Download](#)





[Enlarge](#)

[Download](#)

Image Permissions:



Ophthalmic Atlas Images by [EyeRounds.org](#), [The University of Iowa](#) are licensed under a [Creative Commons Attribution-NonCommercial-NoDerivs 3.0 Unported License](#).

Address

University of Iowa
Roy J. and Lucille A. Carver College
of Medicine
Department of Ophthalmology and
Visual Sciences
200 Hawkins Drive
Iowa City, IA 52242

[Support Us](#)

Legal

Copyright © 2019 The University of
Iowa. All Rights Reserved
[Report an issue with this page](#)
[Web Privacy Policy](#) |
[Nondiscrimination Statement](#)

Related Links

[Cataract Surgery for Greenhorns](#)
[EyeTransillumination](#)
[Gonioscopy.org](#)
[Iowa Glaucoma Curriculum](#)
[Iowa Wet Lab](#)
[Patient Information](#)
[Stone Rounds](#)
[The Best Hits Bookshelf](#)

EyeRounds Social Media

Follow



Receive notification of new cases,
[sign up here](#)
[Contact Us](#)
[Submit a Suggestion](#)